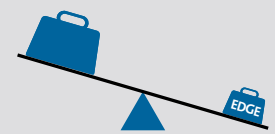


## Corning's EDGE™ Solutions Provide Three Tiers of Value in the Data Centre

### 1. EDGE™ SOLUTIONS VALUE



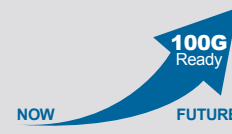
Best-in-Class High-Density Solution



Tool-Less Installation



Superior Finger Access



Plan for Network Changes

### 2. BASE-8 VALUE



Superior Network Scalability



Risk Mitigation



Improved Link Performance

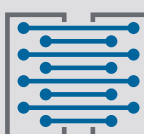


Optimised Port Mapping

### 3. EDGE8™ SOLUTIONS VALUE



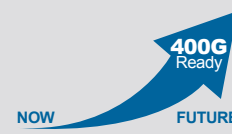
Reduced Patch Cable Complexity



Eliminate Stranded Assets



Ultra-Low-Loss Components



Plan for Network Changes

## We know data centres inside out, but you know your data centre best.

We are ready when you are to start working together to solve your tough data centre challenges. Corning offers the services and support required to design, implement, and maintain your network.

- Award-winning One Call Gets All™ customer care
- 24/7 technical support line staffed by engineers and technicians
- Design assistance and proposal preparation including: needs analysis, schematic drawings, cable routing recommendations, design models, and bills of materials
- On-site technical assistance with your data centre installation
- Network of Preferred Installers (NPI) programme – Certified installers can offer a 25-year extended warranty on our solutions
- Unsurpassed global manufacturing footprint for optical structured cabling systems

CORNING

© 2015 Corning Optical Communications. All rights reserved. LAN-1935-BEN / June 2015

INFINITE POSSIBILITIES  
CORNING'S EDGE™ SOLUTIONS  
FOR DATA CENTRES

CORNING



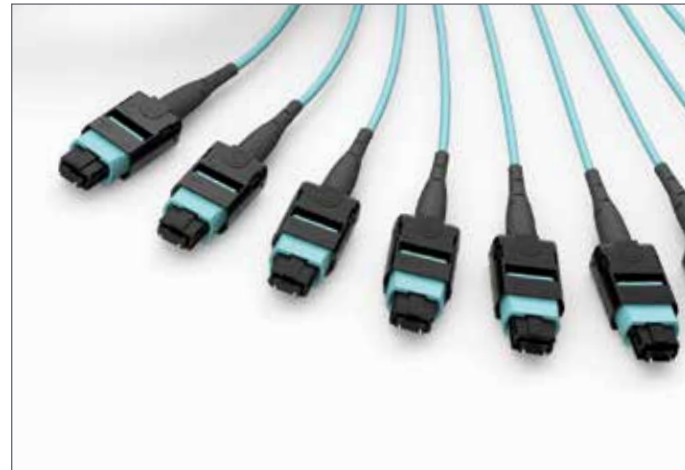
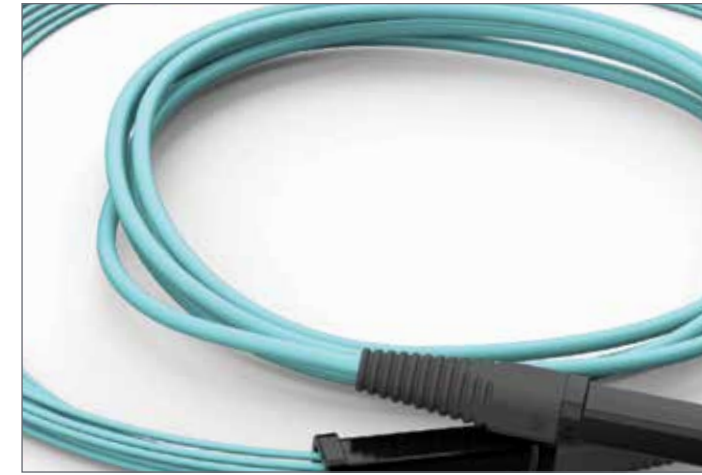
## Getting a Data Centre Up and Running is No Small Task.

Keeping a data centre fully optimised, eliminating latency, reducing downtime, maintaining compliance with continually evolving standards at the ever-increasing transmission speeds required to keep your business competitive – now that's a challenge!

At Corning these are just the kinds of challenges we like to solve. We get data centres. We set the bar for structured cabling in the data centre back in 2009 when we introduced EDGE™ solutions, the industry's first pre-terminated optical cabling system specifically designed for the data centre environment. EDGE solutions are now deployed in over 50,000 data centres in 30 countries around the world.

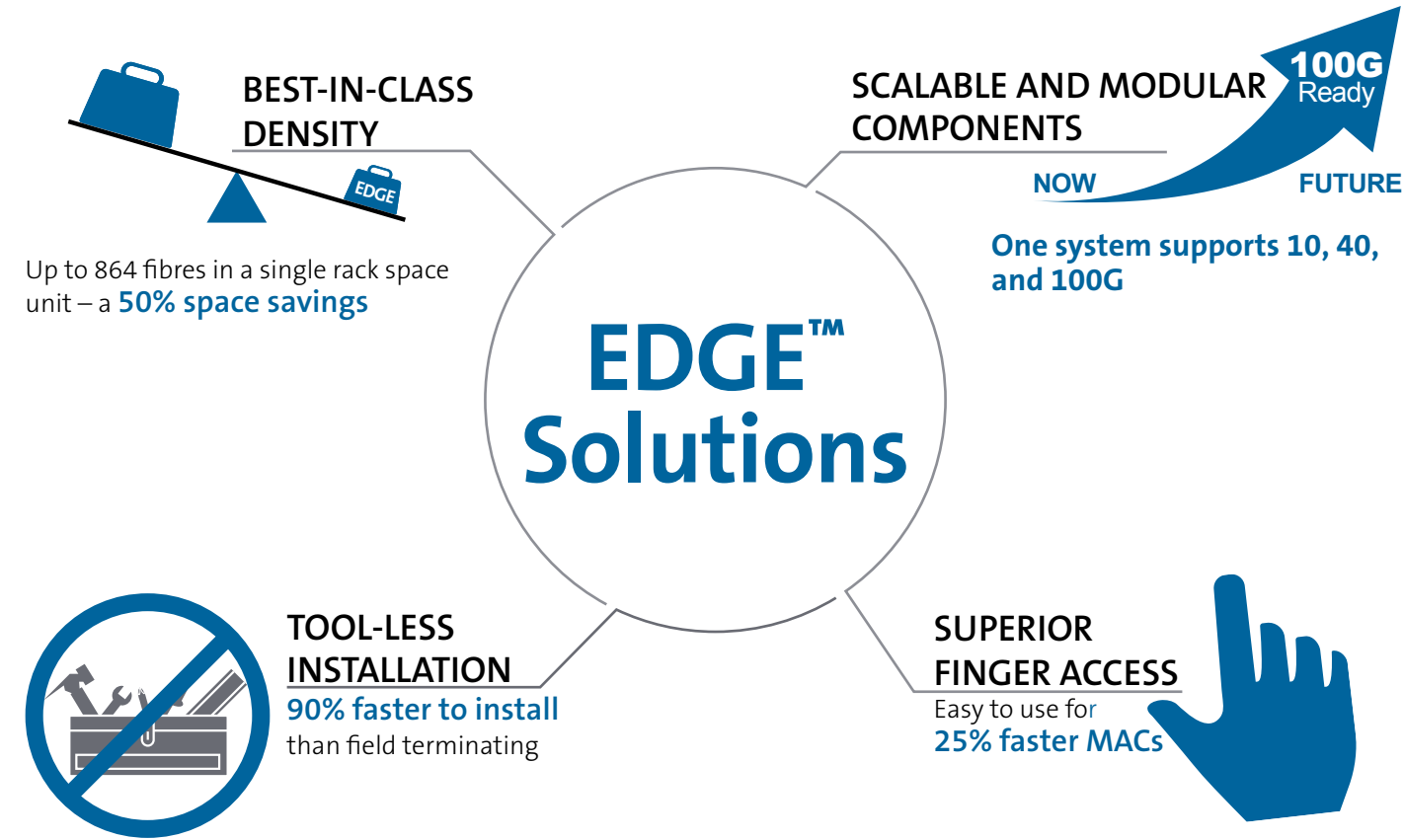
### A SOLUTION FOR EVERY DATA CENTRE

Because every data centre and SAN is unique, EDGE solutions provide a family of modular, tip-to-tip connectivity options that are uniquely configurable. Each includes cabling, housings, modules, panels, and patch cables. And each offers faster, simpler installation, higher density, superior cable management, easier moves, adds, and changes (MACs), and more flexible migration paths than competing data centre solutions. But each EDGE solution set supports a different approach to data centre management.



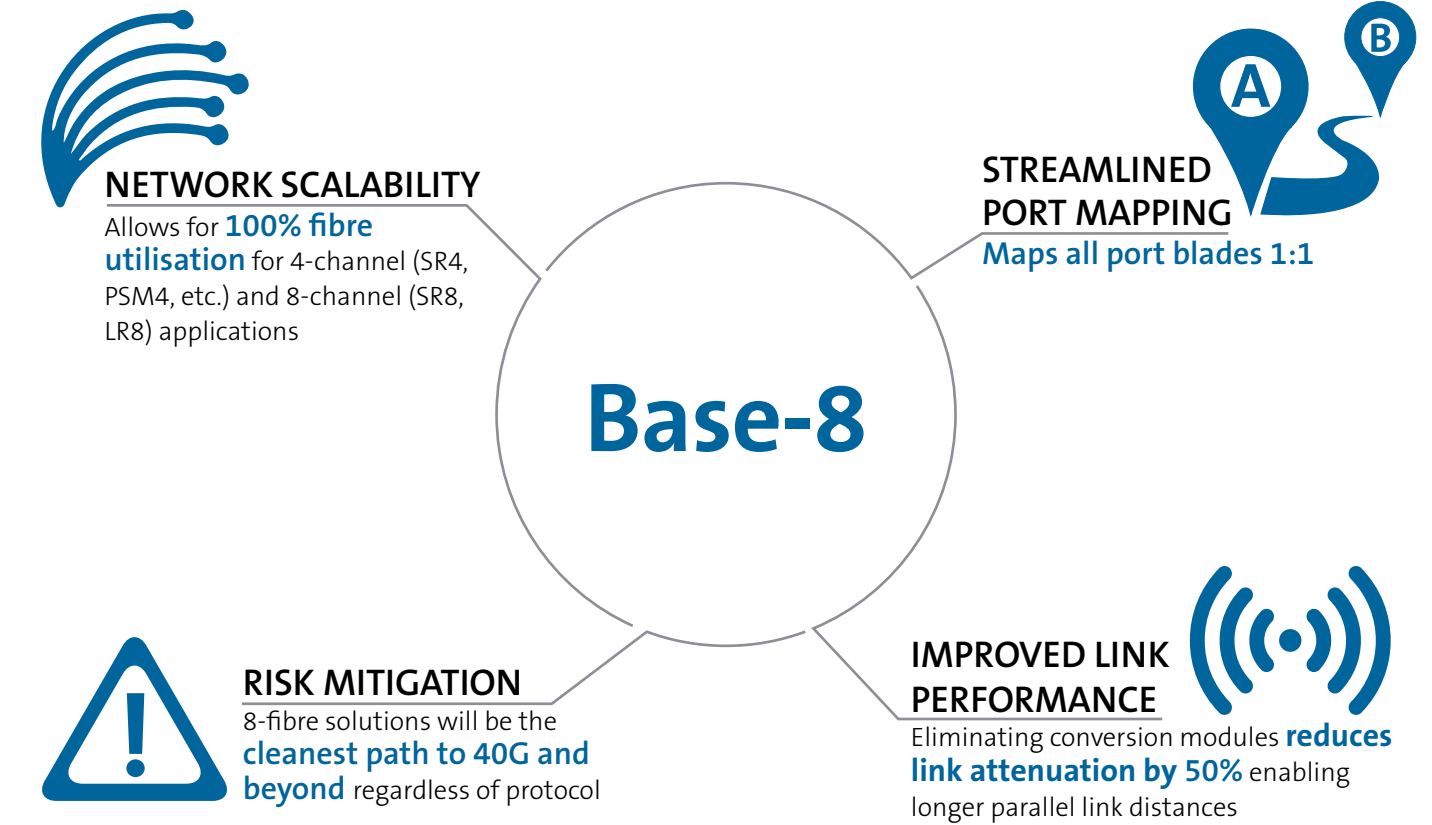
## Corning's EDGE™ Solutions

While EDGE solutions continue to evolve, the foundation that they were designed upon – a fundamental understanding of the pain points inherent in managing a data centre – has not. Density, network uptime, speed, simplicity, and a clear migration path to meet future requirements – these are all still critical considerations in any data centre environment. EDGE solutions offer:



## Why Base-8 and Why Now? The Case for Base-8:

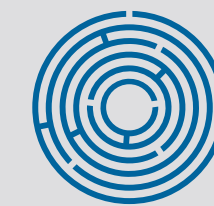
Technology road maps of transceiver, switch, server, and storage makers clearly illustrate that transmission speeds ranging from 4 to 400G will be based on either 2- or 8-fibre connectivity solutions. Base-8 connectivity provides the most future-ready solution to support 400G transmission requirements, and the benefits are clear:



## Introducing Corning EDGE8™ Solutions – Because Sometimes Less Really is More

EDGE8 solutions combine all of the density, simplicity, scalability, and modularity of Corning's EDGE solutions with the superior network scalability, improved link performance, and 100% fibre utilisation of a Base-8 design.

Corning's EDGE8 solutions further the value of Base-8 connectivity by providing outstanding value in three critical areas:



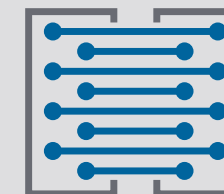
### REDUCE PATCH CABLE COMPLEXITY

**67% reduction in inventory.** EDGE8 trunks are pinned allowing for a single pinless patch cable deployment for all installations, reducing stocking and deployment complexity

### 1. ASSET UTILISATION

### ELIMINATE STRANDED CABLING ASSETS

**Optimised harness mapping.** Allows for 24-, 32-, 36-, and 48-port blades on large chassis switches to be cabled with 8-fibre harnesses with no unused fibre/connectors



### 2. TECHNOLOGY ADOPTION



### PREPARE FOR RAPIDLY CHANGING TECHNOLOGY

**30% fewer MTP® connectors** in the link equates to both cost and loss savings. **50% link-loss improvement** + improved MTP connector performance + improved module loss (0.35 dB) = extended reach

## EDGE8™ Solutions

### 3. RISK AVOIDANCE

### PLANNING FOR NETWORK CHANGES

EDGE8 solutions provide the **simplest path to 40, 100, and even 400G**

**400G Ready**

NOW

FUTURE